

# **Perth Amboy Public Schools School Performance Report**

**Board of Education Presentation  
August 29, 2024**





# NJ School Performance Reports

The New Jersey Department of Education (NJDOE)'s School Performance Reports provide information about schools and districts. The reports show various data points for schools and districts that can identify strengths and areas for improvement.

The report consists of 11 sections, which may not be applicable to all districts and/or schools. The report sections are:

- Overview
- Demographics
- Student Growth
- Academic Achievement
- College and Career Readiness
- Graduation/Postsecondary
- Climate and Environment
- Staff
- Per-Pupil Expenditures
- Accountability
- Narrative



# NJ School Performance Reports

At the last July 2024 Board Meeting, statements were made about individual school's academic achievement for the 2022-2023 school year.

We cannot just look at data surrounding academic achievement, as there are many other factors that contribute to a school's performance. Student growth is also a major component of what is reported for state assessments and paints a fuller picture of the district's progress.

In addition, according to the NJDOE,

"The 2022-2023 School Performance Reports include all data that was previously reported prior to the COVID-19 pandemic, which includes all assessment, student growth, and accountability.

**Data throughout the reports has been impacted by the pandemic in various ways, so the NJDOE recommends caution in comparing data from year to year.**"

*(New Jersey Department of Education, 2023 NJ School Performance Report)*



# Student Achievement and Growth Data

The following slides include data on the proficiency rate for federal accountability from the 2014- 2015 school year to the 2022-2023 school year and median student growth percentile data from the 2011-2012 school year to the 2022-2023 school year. This data is the furthest historical available for these specific categories through the NJ School Performance Report. In addition, it is important to note changes to the NJ State Assessments for the following years:

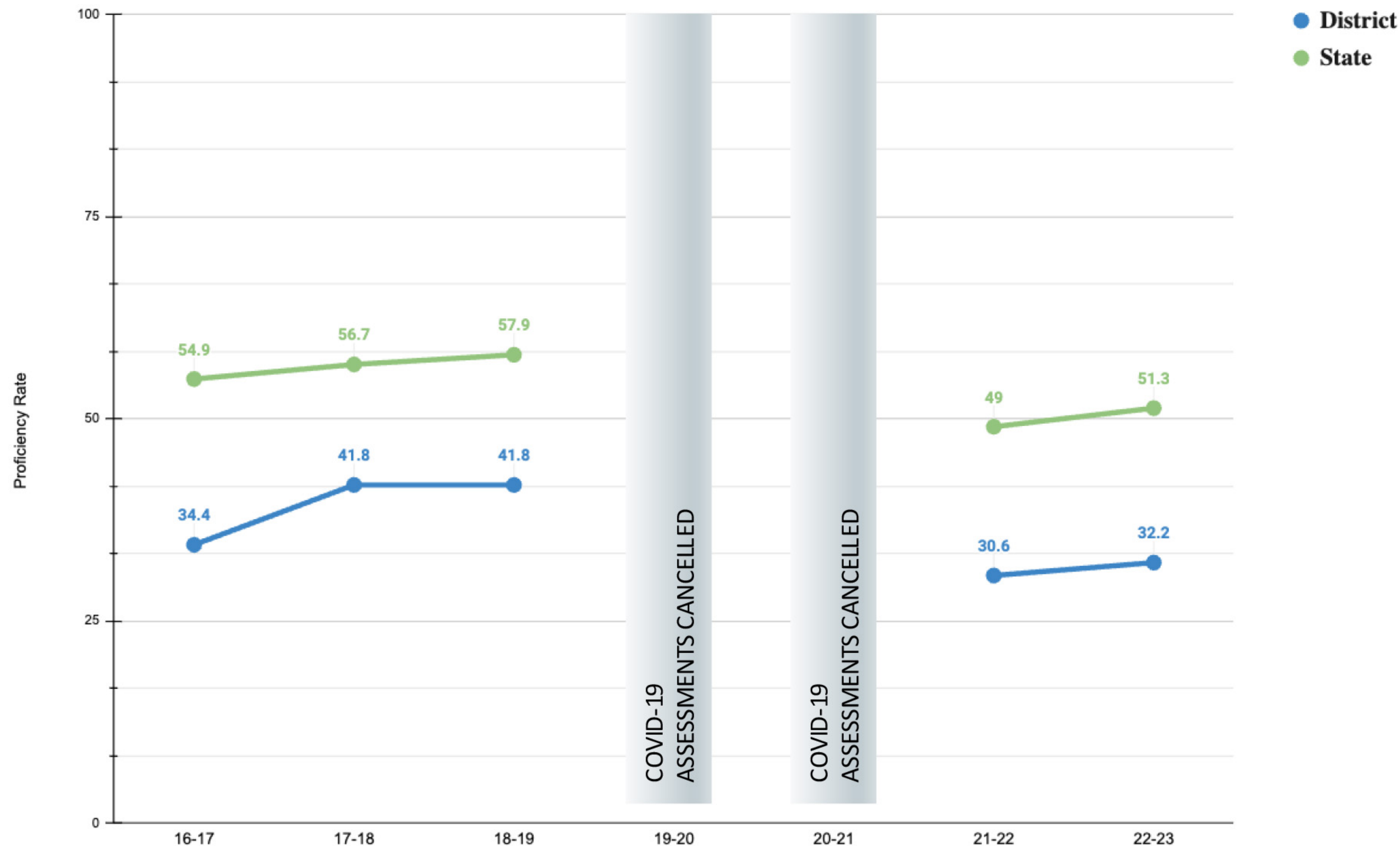
- 2014-2015, PARCC Assessment was used to replace NJASK
- 2018-2019, NJSLA Assessment was used to replace PARCC
- 2019-2020 and 2020-2021, the NJSLA Assessment was canceled due to COVID-19

Previous to the 2014-2015 school year, the state used NJASK which was a very different assessment than the PARCC and NJSLA and thus would not be appropriate to compare proficiency rates.



# ELA Proficiency Rates – District and State

Historical State Assessment Proficiency Rate for Federal Accountability  
English Language Arts



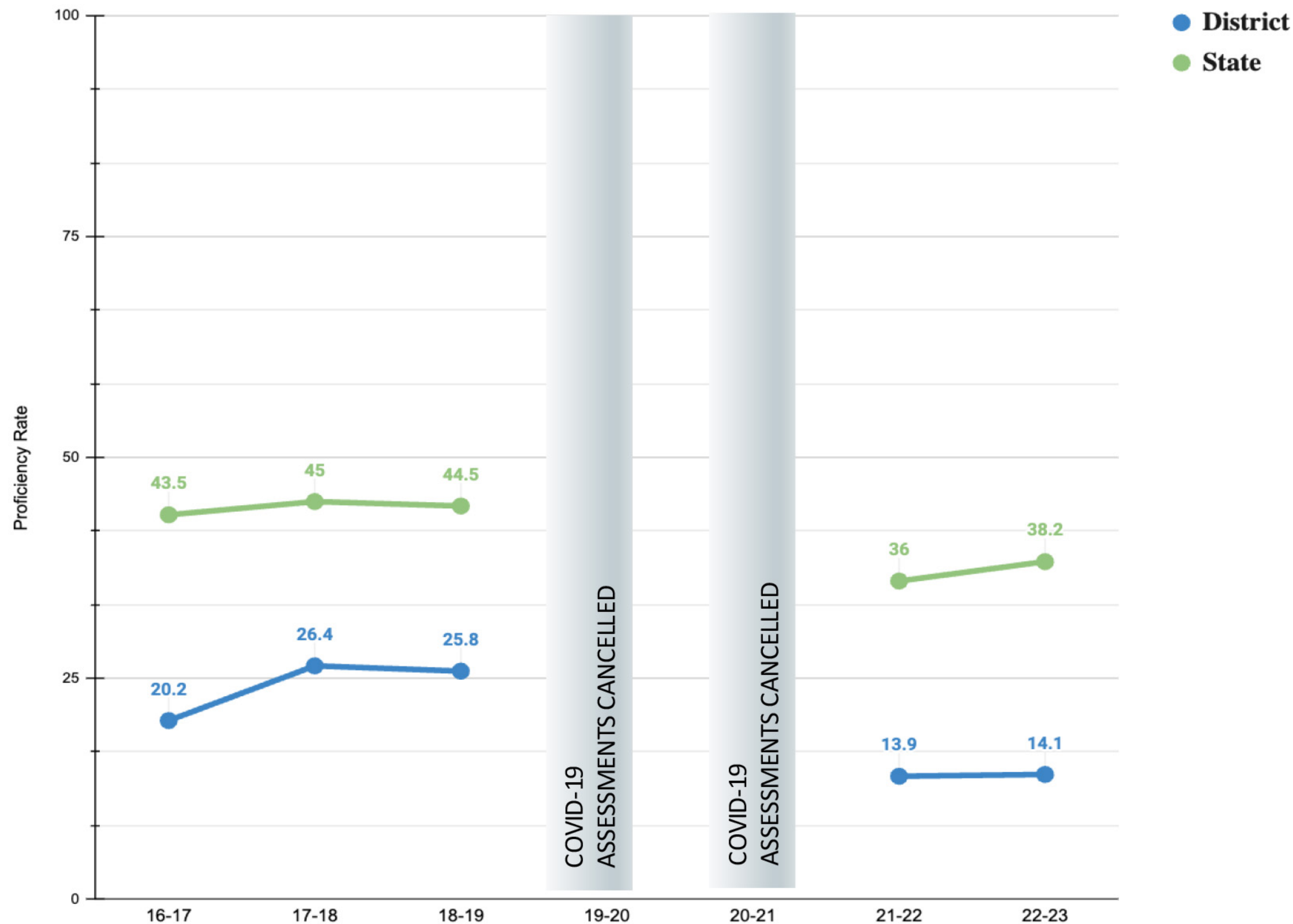
From the 2016-2017 school year to the 2018-2019 school year, the District's ELA proficiency increased by 7.4%

Like the State of NJ, the ELA proficiency rates dropped after the COVID19 Pandemic. Despite this drop, the District's ELA proficiency increased from 30.6% in the 2021-2022 school year to 32.2% in the 2022-2023 school year.



# Math Proficiency Rates – District and State

## Historical State Assessment Proficiency Rate for Federal Accountability Mathematics



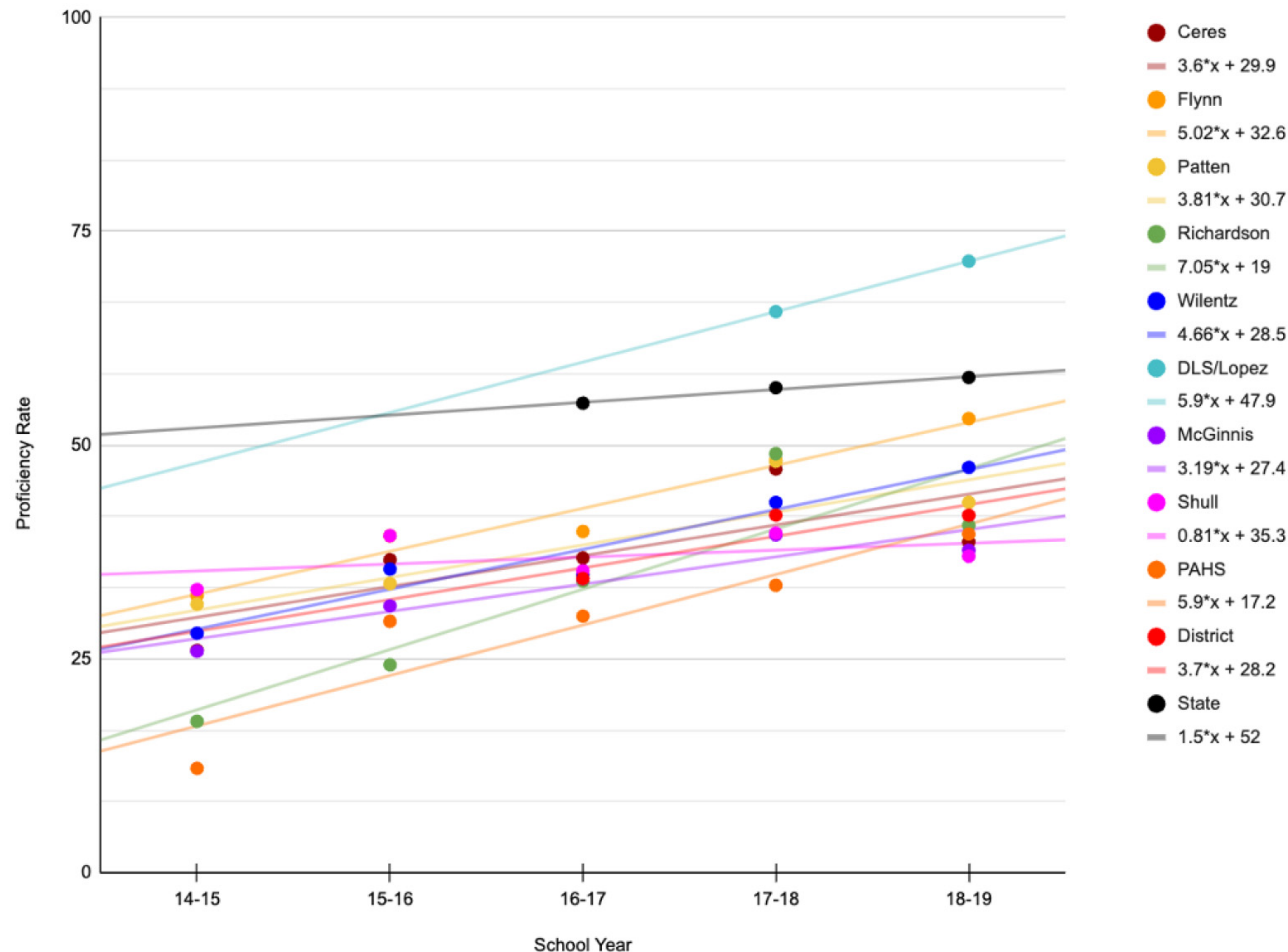
From the 2016-2017 school year to the 2018-2019 school year, the District's math proficiency increased by 5.6%

Like the State of NJ, the math proficiency rates dropped after the COVID19 Pandemic. Despite this drop, the District's math proficiency increased from 13.9% in the 2021-2022 school year to 14.1% in the 2022-2023 school year.



# ELA Proficiency Trends (2014-2015 SY to 2018-2019 SY)

State Assessment Historical (2014-2019) Proficiency Rate for Federal Accountability  
English Language Arts

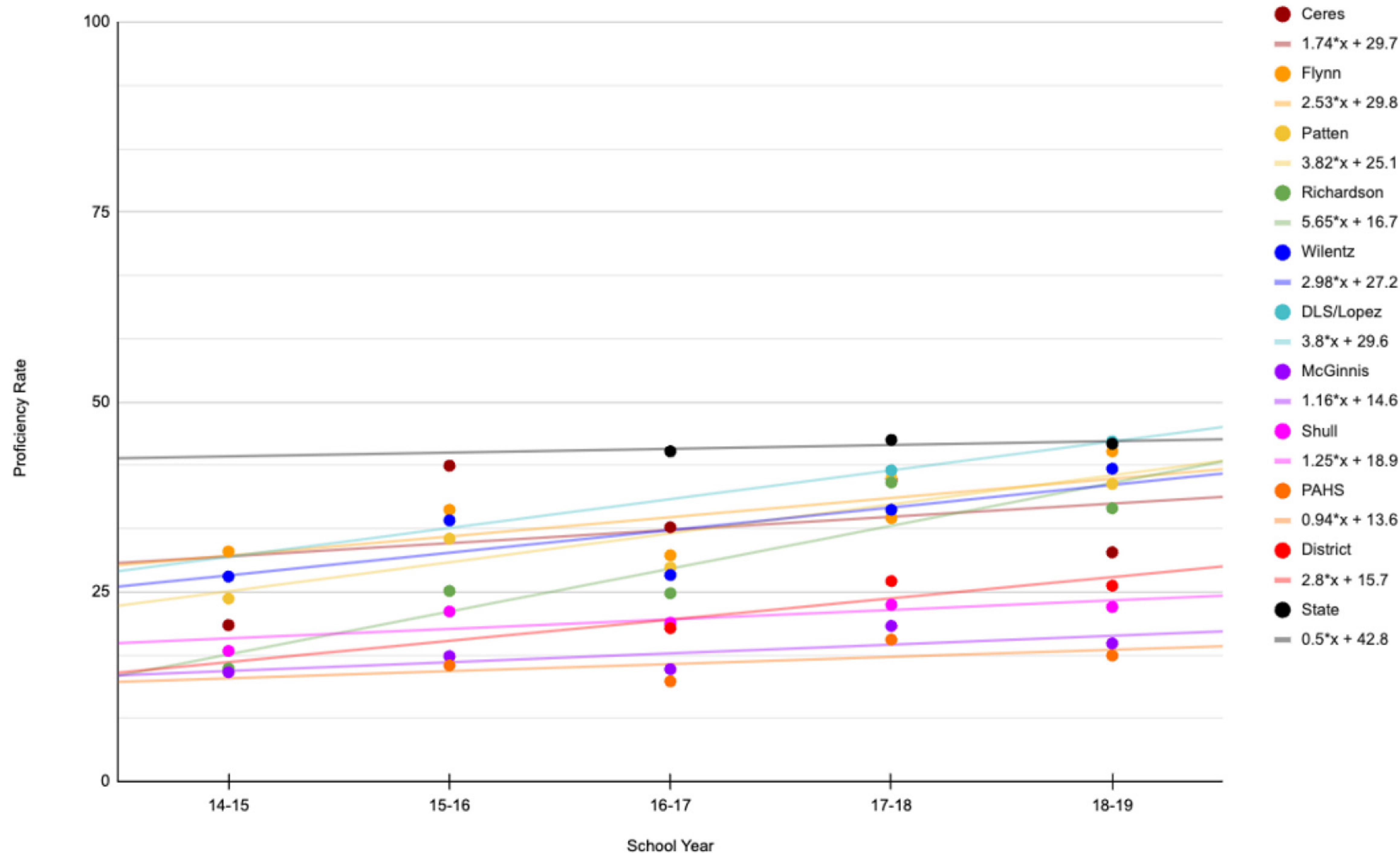


Trend lines for **all but one school** in the district, from the 2014-2015 school year until the 2018-2019 school year, showed higher growth in ELA proficiency rates than the state average, prior to COVID19.



# Math Proficiency Trends (2014-2015 SY to 2018-2019 SY)

State Assessment Historical (2014-2019) Proficiency Rate for Federal Accountability  
Mathematics



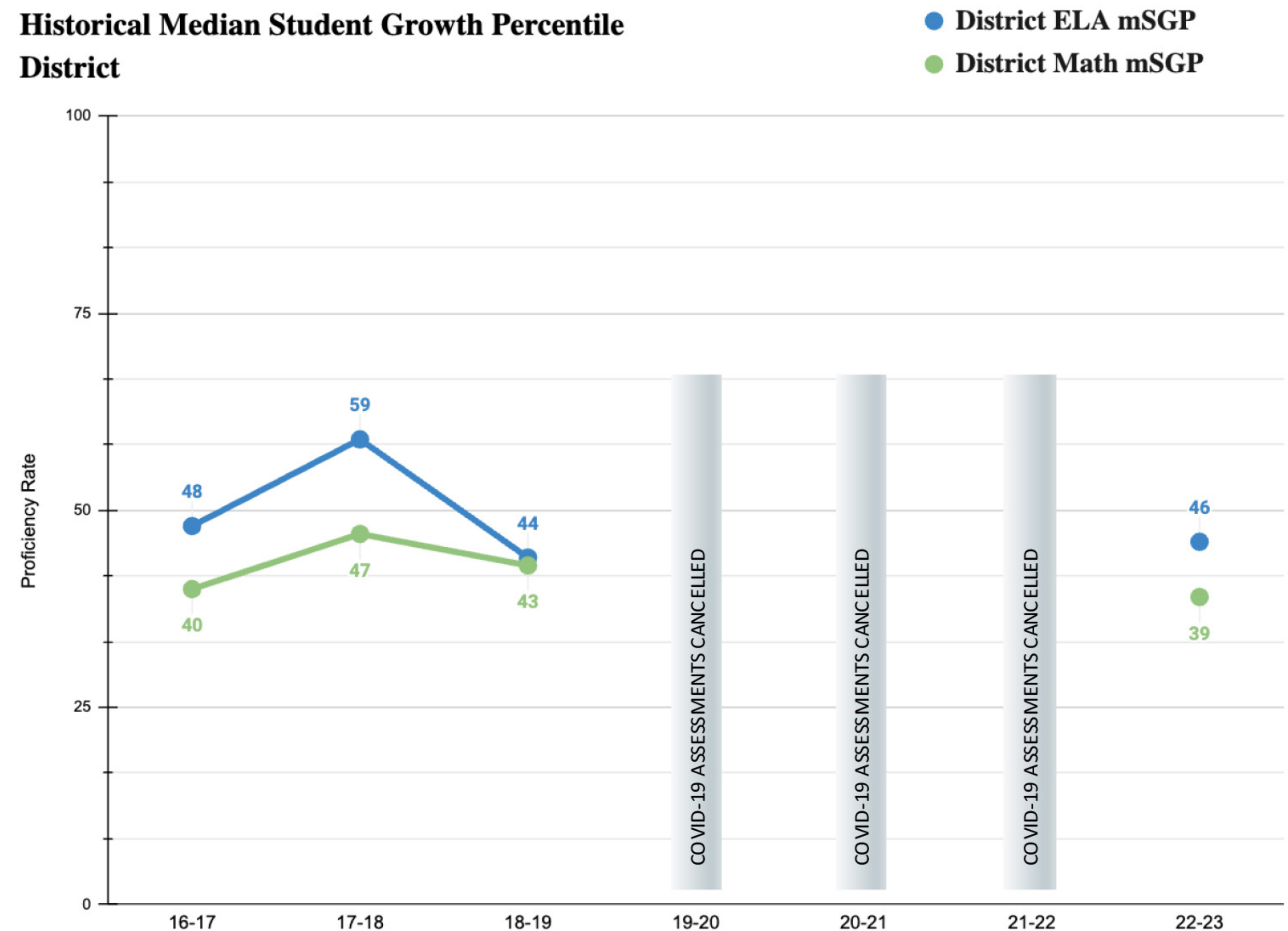
Trend lines for all schools in the district, from the 2014-2015 school year until the 2018-2019 school year, showed higher growth in Math proficiency rates than the state average, prior to COVID19.



# Student Growth

- **Student Growth** is a measure of how much students are learning each year. The state measures academic progress with schools' **median student growth percentile (mSGP)** on statewide ELA and mathematics assessments. If the SGPs for all students are ordered from smallest to largest, the mSGP is the percentile in the middle of the list.
- An mSGP below 35 indicates low growth, ***an mSGP between 35 and 65 indicates typical growth***, and an mSGP greater than 65 indicates high growth.
- The District showed **typical growth** in ELA and math from the 2016-2017 school year through the 2018-2019 school year and has maintained typical growth even after the COVID19 Pandemic.

Historical Median Student Growth Percentile  
District





# 2024 Every Student Succeeds Act (ESSA) State Plan

After reviewing the District data available through the NJ School Performance Reports, It is important to note that key modifications are recommended for the new 2024 ESSA plan, which is currently open for public comment through the NJDOE. **These modifications will change many of the ways the data on student achievement is calculated.** Some of these key modifications in student achievement are:

- **A change to the way that proficiency is measured**, because an index-based measure of proficiency helps to better differentiate schools with students furthest away from meeting grade-level expectations and therefore in most need of support.
- **Changing long term goals from 12 years to 6 years**, because the current formula for 12 years does not include readjustments to chart a path of incremental yearly progress toward long-term goals based on an LEA's most recent performance.
- **A change to the "target not met" language to include "progress, target not met"**, because this allows the NJDOE to highlight and reward continuous improvement efforts for schools that are making progress even if they have not fully met their targets. *(New Jersey's Every Student Succeeds State Plan, Revised 2024, Draft for Public Comment)*



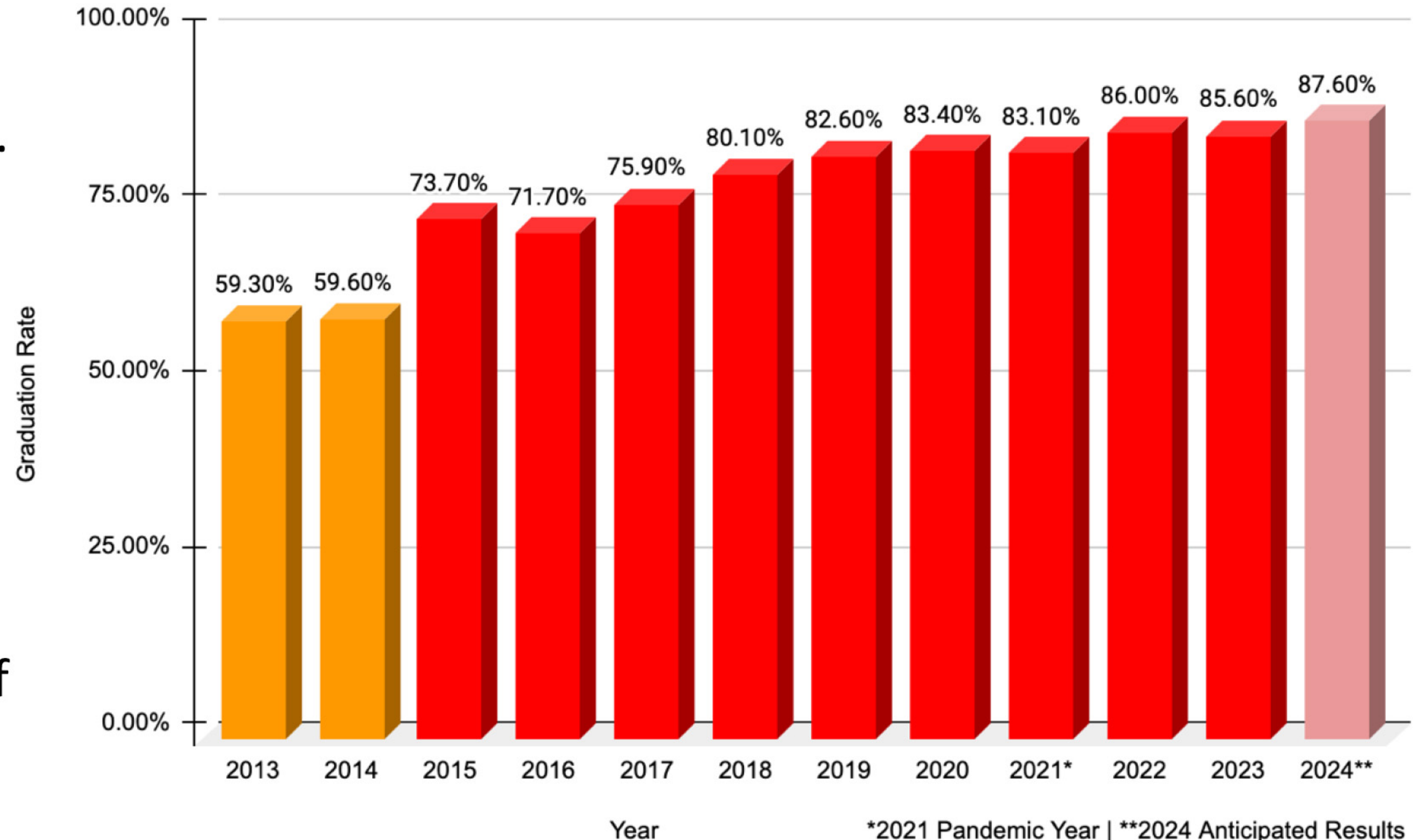
**What the NJ School Performance  
Report doesn't include...**



# Graduation Rates

- Prior to 2015, the District's graduation rate was in the 50s.
- In the last 11 years, the percent of students who graduated have increased by over 28%.
- The anticipated graduation rate for the Class of 2024 is 87.60%, pending the release of the 2024 School Performance Report.

Perth Amboy School District Graduation Rates

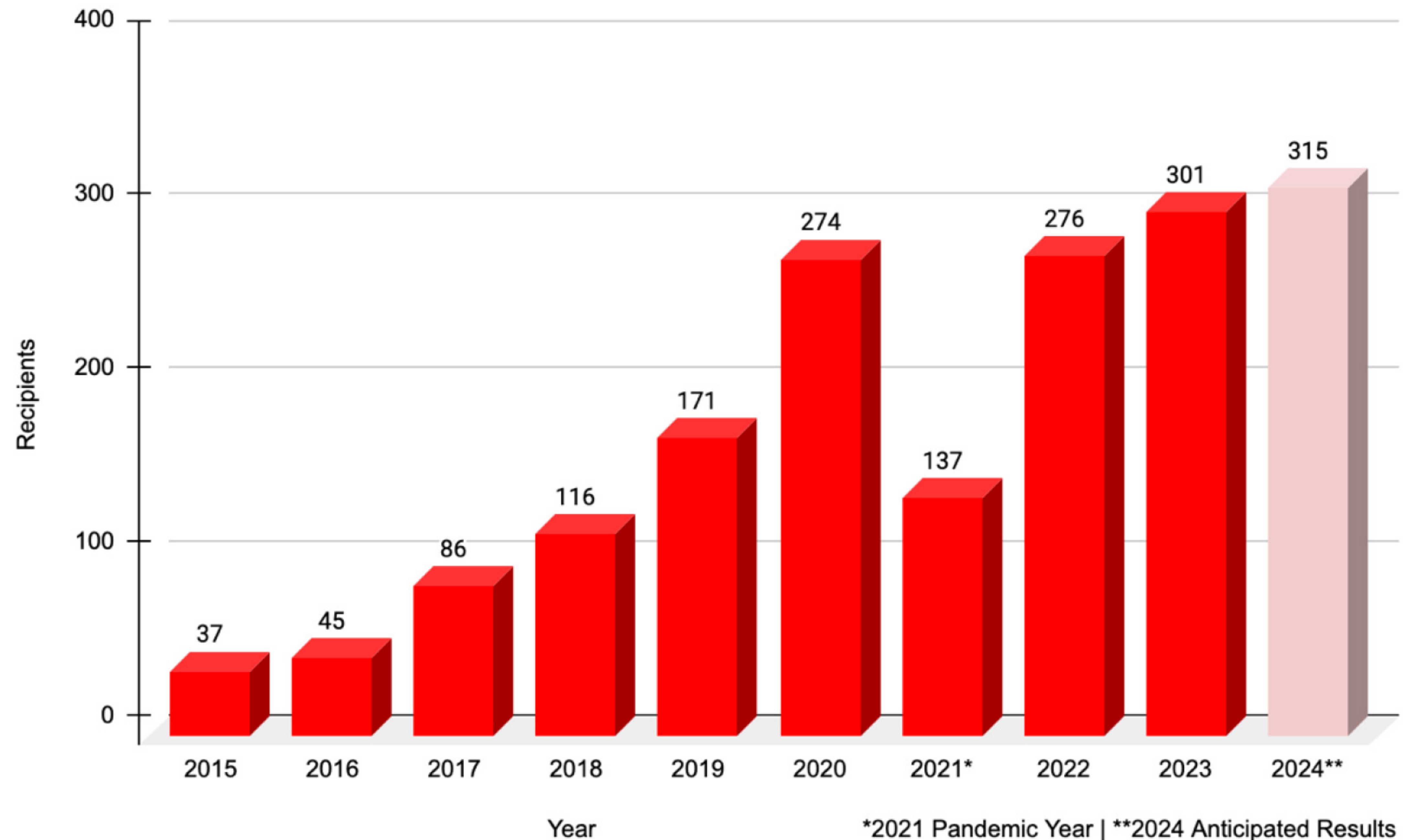




# Seal of Biliteracy

- Prior to 2017, the District awarded the Seal of Biliteracy to less than 50 students annually.
- In the last 9 years, the number of students awarded the Seal of Biliteracy has increased by over 750%.
- 315 students are anticipated to receive the award for the 2023-2024 school year.

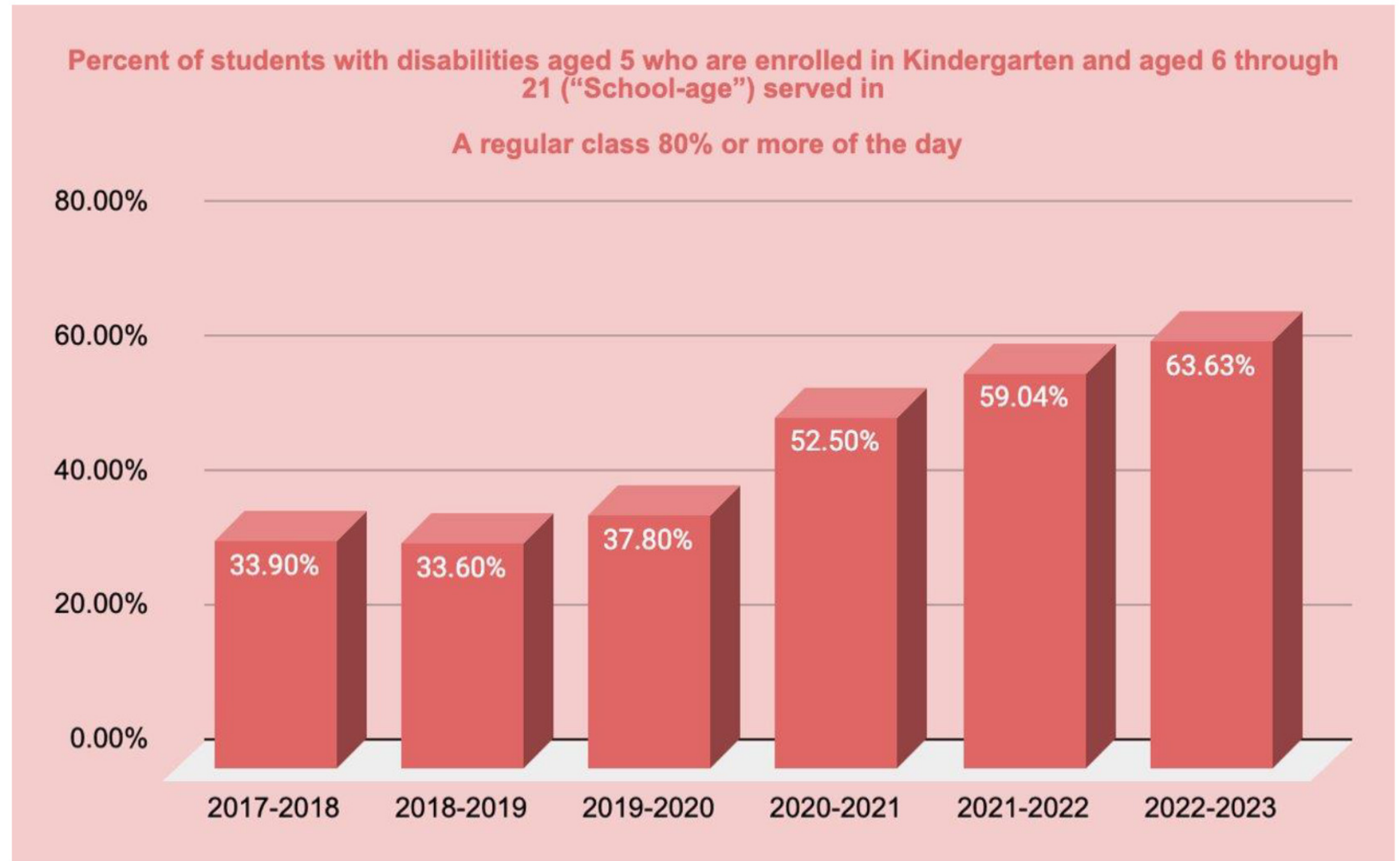
Perth Amboy Seal of Biliteracy Award Recipients





# Inclusion Rate

- Prior to the 2020-2021 school year, the inclusion rate was below 50%.
- In the last 5 years, the inclusion rate has increased by 29.73%





# US News and World Report Ranking 2024

- Perth Amboy High School was ranked 257 out of 426 high schools in New Jersey.
- Perth Amboy High School went up 47 spaces in the state rankings since 2020.
- Perth Amboy High School was ranked 7,796 out of nearly 18,000 schools in the United States.
- Perth Amboy High School went up 1,875 spaces in the national rankings since 2020.
- Perth Amboy High School ranked **higher** than some neighboring high schools in Middlesex County.

